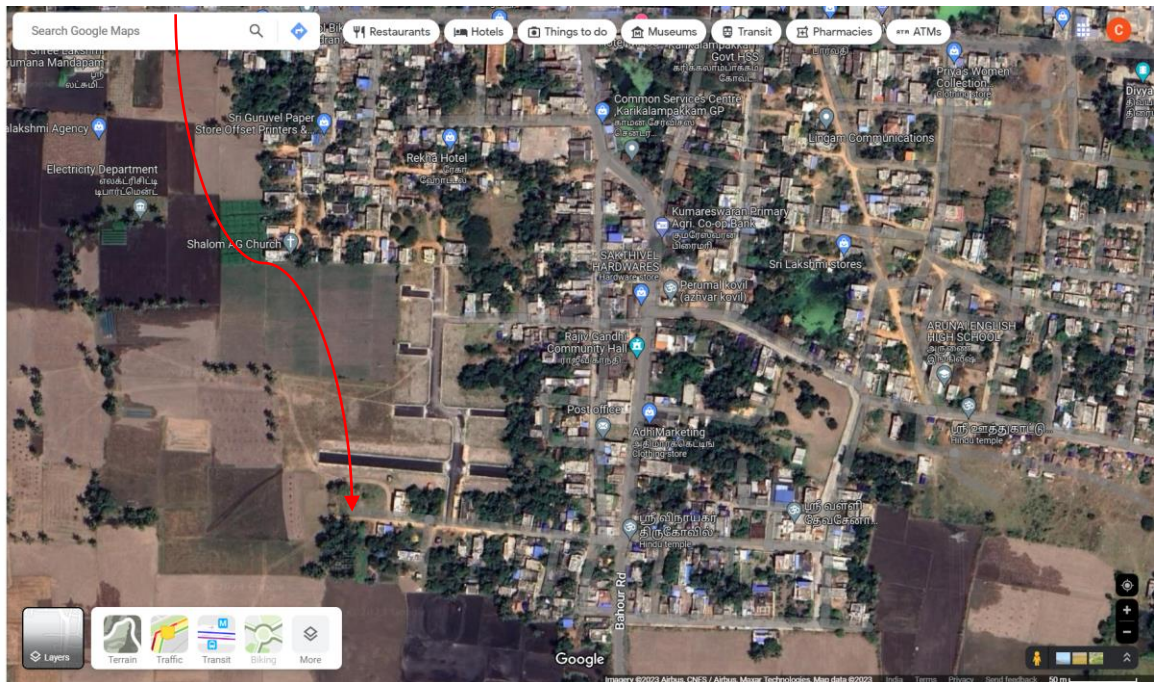


## LOCATION DETAILS

The proposed layout **"SRI BALAJI NAGAR EXTENSION"** at R.S. No. 60/8APT, Karikalampakkam Revenue Village, Nettapakkam Commune, Puducherry with a total extent of **4480.15 Sq.M** is having is Latitude and Longitude as **11°51'42.8"N 79°44'51.9"E**



N. Dhanu Balan

N. Dhanu Balan

K. Hemath

N. Fat

N. Sarise